

Heathfield Drive Mitcham, CR4 3RD

£650,000 Freehold



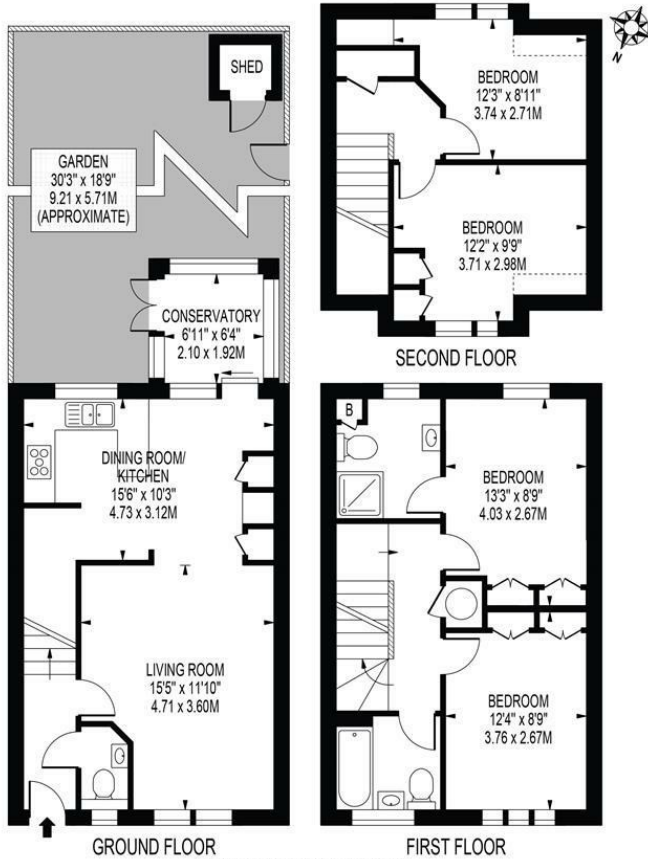
Offered with no onward chain is this absolutely stunning, recently refurbished four bedroom family home located on the borders of Tooting, within walking distance to Colliers Wood Tube Station. Comprising of a fantastic fully fitted kitchen/diner including dishwasher with bi-folding doors that lead out onto conservatory with heating and the private south facing rear garden, spacious lounge, downstairs W/C, four bedrooms, en-suite to the master and the family bathroom both have underfloor heating. This property also has the added benefit of off street parking, making it perfect for any family.

HEATHFIELD DRIVE

APPROXIMATE GROSS INTERNAL FLOOR AREA: 1147 SQ FT - 106.57 SQ M

(INCLUDING RESTRICTED HEIGHT AREA & EXCLUDING SHED)

APPROXIMATE GROSS INTERNAL FLOOR AREA OF RESTRICTED HEIGHT: 12 SQ FT - 1.12 SQ M



- Four Bedrooms
- Beautifully Presented
- Recently Refurbished
- Two Bathrooms
- Downstairs W/C
- Off Street Parking
- South Facing Garden
- Chain Free
- EPC Rating : C
- Merton Council Tax Band : E

Energy Efficiency Rating		
	Current	Potential
Very energy efficient - lower running costs		
(92 plus) A		
(81-91) B		
(69-80) C		
(55-68) D		
(39-54) E		
(21-38) F		
(1-20) G		
Not energy efficient - higher running costs		
		85
	72	
England & Wales		
		EU Directive 2002/91/EC

For Free Mortgage Quote and Best Mortgage Rates, call an Ellisons Mortgage Advisor on 020 8544 0518



Although these particulars are believed to be correct, their accuracy is not guaranteed and they do not form part of any contract.

Celebrating 30 years of successful Sales and Lettings in Merton

